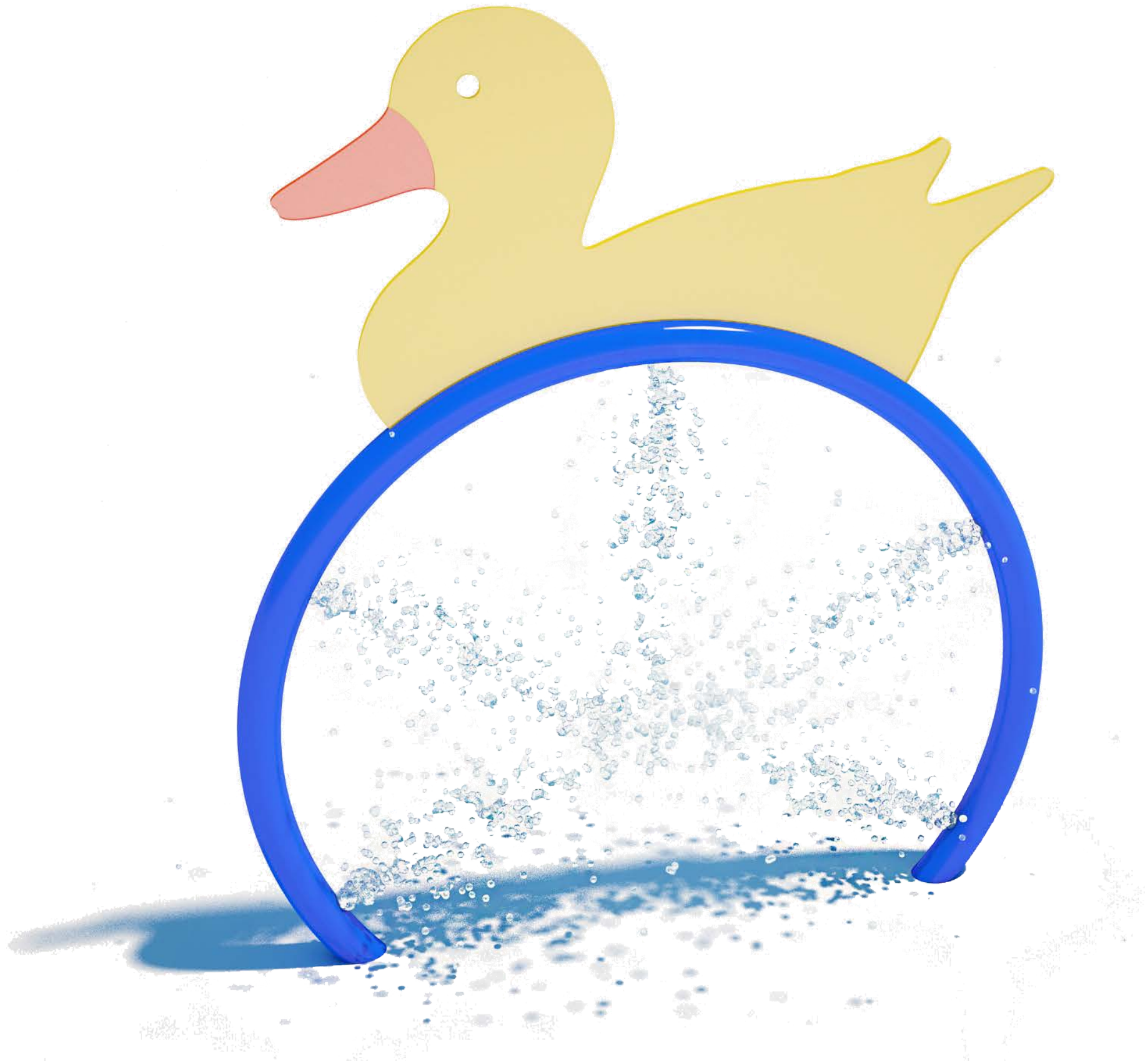



DUCK LOOP S-03.02.15



7531



Flow Rate	10-12 gpm - 36-48 lpm	Material Detail Commercial, non corrosive, chemical resistant 304/304L quality Stainless steel construction with polycarbonate and brass nozzles	Coating / Graphic Design UV and chemical resistant, oven cured, polyester powder coating	
Pressure	8-12 psi - 0.5-0.8 bar		Pipe Diameter	ø3" - ø90 mm
Height	95.6" - 243 cm		Add-in Options  Removable	
Length	-	Play Zones Toddler Family Dynamic		
Width	71.6" - 182 cm			
Spray Zone	110" - 280 cm			